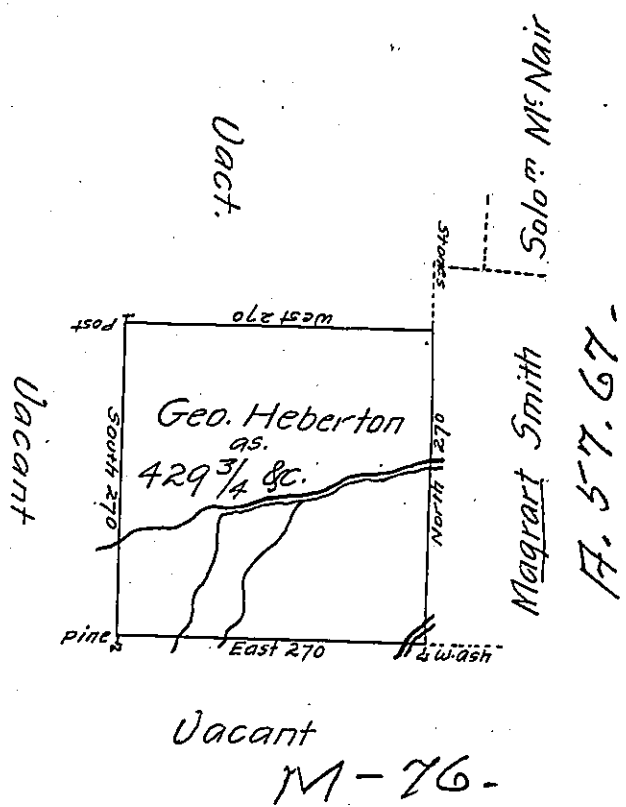


Butler & 167

Foster -
Luzerne



Vacant
M-76-

Draft of a tract of land Called _____ Situate on the waters
of Lehi—Near Land Surv^d for Solo^d M^e Nair in the County of Luzerne
Containing four Hundred twenty Nine acres $\frac{3}{4}$ & allow^e Surveyed for
George Heberton the 13th. day of June 1793 by Virtue of a warrant
dated the 24th. day of Decr. 1792.

by

Daniel Brodhead Esqr. }
Surv^r Genl. }

Wm. Gray D.S.

IN TESTIMONY that the above is a copy of the original remaining on file in
the Department of Internal Affairs of Pennsylvania, made
conformably to an Act of Assembly approved the 16th day of
February, 1833, I have hereunto set my Hand and caused
the Seal of said Department to be affixed at Harrisburg,
this eighth day of February 1905

Samuel J. Brown
Secretary of Internal Affairs